

 IMPALA PLUS[®]

SEMI AUTO SHOTGUN OWNER'S MANUAL

Model :

Serial No:

Purchased from :

Date of purchase :

INDEX

Safety Rules	4
Introduction	5
Usage	5
Warranty	6
Assembly	7
Safety button	8
Loading	9
Cartridge Change	11
Unloading	12
Troubleshooting	13
Cartridge Selection	13
Maintenance	13
Disassembly for maintenance	14
Assembly after maintenance	16
Choke	18
Schema and part list	20



SAFETY RULES

Safety rules given in this manual are important reminders for owners or users of firearms.

Firearms may be dangerous if they are not used accurately, they have potential to cause serious and irreparable damages.

- 1- Definitely do not point the firearm towards a person or towards any direction other than a SAFE direction out of shooting position.
- 2- Always handle firearms as if they are loaded.
- 3- Keep your finger away from trigger until you see a target.
- 4- While loading or unloading the shotgun and also loading cartridge into the chamber and closing the boltslide, keep gunlock turned off and your finger away from trigger.
- 5- Prior to shooting to target, make sure that there is no person, animal or any other object that may be shot behind or in the vicinity of target.
- 6- Definitely do not give to or receive from anyone any shotgun mechanism of which is

not open.

- 7- While loading bullets, strictly comply with instructions in this booklet and make sure that bullet is in excellent condition.
- 8- Prior to use, check if the shotgun is unloaded and locked as bolt slide open, whether there is any matter in barrel of the gun.
- 9- Prior to firing a gun you are not familiar with; make sure that you fully comprehend its manner of work: lack of experience may cause severe accidents.
- 10- You are recommended to wear protection, earflaps and goggles while shooting.
- 11- Always keep your hands and fingers away from gun muzzle to avoid injuries and burns.
- 12- Firearms and cartridges must be always kept separately and must be kept under lock out of reach of children.
- 13- Do not drink alcoholic beverages prior to or during handling firearms.
- 14- Never fire the gun without aiming. Do not

fire in the water and to the hard objects such as rocks. Be careful when shooting above iced and very hard grounds.

- 15- Only use proper ammunition with caliber marked on the barrel.
- 16- Prevent snow, rain or any foreign substance entering inside barrel; otherwise the pressure occurring may exceed the limits for danger

DO NOT FORGET

PAY UTMOST ATTENTION TO HOW TO HANDLE YOUR SHOTGUN. ALMOST ALWAYS ACCIDENTS ARISE FROM NON-COMPLIANCE WITH BASIC SAFETY RULES.

If you have questions or comments, please feel free to write us.

info@kfi-usa.com

WARNING



-Regular maintenance and cleaning prolongs to lifetime your rifle.

Firearms must be handled responsibly and securely stored to prevent access by children and other unauthorized users.

California has strict laws pertaining to firearms, and you may be fined or imprisoned if you fail to comply with them. Visit the Web site of the California Attorney General at <https://oag.ca.gov/firearms> for information on firearm laws applicable to you and how you can comply.

Prevent child access by always keeping guns locked away and unloaded when not in use. If you keep a loaded firearm where a child obtains and improperly uses it, you may be fined or sent to prison.

ADVERTENCIA



Las armas de fuego deben ser manipuladas responsablemente y almacenadas en sitios seguros para prevenir el acceso a ellas por parte de niños y personas sin autorización.

California cuenta con leyes estrictas sobre las armas de fuego, y puede ser multado y encarcelado si no las obedece. Visite la página web de California Attorney General, <https://oag.ca.gov/firearms> para más información sobre cómo cumplir con las leyes de armas de fuego.

Prevenga el acceso de los niños a las armas de fuego manteniéndolas siempre en un lugar seguro, bajo llave y descargadas cuando no estén en uso. Si usted deja un arma cargada al alcance de un niño, y éste la utiliza indebidamente, usted podría ser multado e incluso enviado a la cárcel.

INTRODUCTION

Istanbul Silah ve Savunma Sanayi is proud to manufacture and launch its new product IMPALA PLUS, a semi-automatic smoothbore shotgun which operates with kinetic energy system.

Scantiness of number of parts, rotor locking system, locking system's being 6-legged and therefore capability of fast lock opening with much less rotation movements, elimination of probability of ejection of cocking handle by means of plug and turn locking system performed on cocking handle renders the shotgun excellent and we believe that it would provide unlimited customer satisfaction.

USAGE

IMPALA PLUS semi-automatic hunting shotguns operate on the basis of same basic inertia principle identical with fixed barrel which benefits from gun recoil kinetic energy which still represents one of the most important and creative hunting gun manufacture innovations of present day.

This system operates by means of a spring



freely positioned between rotary bolt and bolt slide.

While a gun recoils during firing, the spring between rotary bolt and bolt slide gets squeezed and after being fully squeezed energy created on spring is discharged and gives a backward motion to the bolt slide. In the meantime, the shotgun which fulfills unlocking function shoots empty case and drives 2nd cartridge to chamber while closing again with action spring.

Automatic operation of this new hunting shotgun eliminates disadvantages of recoil system (restraining the system during firing and barrel vibrations necessary for balancing the system while firing a strong bullet, etc.) and disadvantages of gas-operated traditional type (need to clean gas outlets, loss of power due to acceleration of shot load, adverse impacts on longitudinal fuse and probable malfunctions under bad climate conditions).

For these reasons, IMPALA PLUS shall provide service to customers as an extremely safe and trouble-free hunting shotgun.

Rotary bolt of the shotgun is designed as 6-lugs for opening less and shorter rotation movement and by using less energy.

It has a special trigger system to allow user to pull the trigger with minimum impact. Loading system is provided with a functional part hidden in trigger group.

When the shotgun is shot, hammer pushes disconnecter upward and releases carrier latch. When the carrier latch is released, cartridge in magazine comes freely and pressing the carrier latch front part of the carrier latch prevents arrival of 2nd cartridge.

Bolt spring inside the bolt slide gets squeezed due to shooting pressure and afterwards rotary bolt opens due to squeeze reaction and the bolt slide starts backward movement with kinetic energy reaction. During this movement, extractor removes empty cartridge from chamber and pulling until ejector pin ejects out from receiver. When backward movement of the bolt slide ends, it starts to close again upon squeeze of action spring.

When closing occurs, by means of carrier, the 2nd cartridge ready waiting at the carrier is lifted and rotary bolt feeds it to the chamber. Rotary bolt locks and rotation is completed. 2nd cartridge is now ready to be shot.

Thanks to high performance obtained, a great variety of cartridges may be used in this hunting shotgun. However, inertial system requires minimum kinetic energy which is necessary for ensuring regular cycling.

WARRANTY

Warranty terms are set forth at warranty certificate.

Istanbul Silah ve Savunma Sanayi may not be held responsible for accidents and damages arising out of unsuitable cartridge, failure to maintain or misuse of the gun.

ASSEMBLY PROCEDURE

1) Remove magazine by turning counterclockwise. (figure 1)



2) Remove forend. (figure 2)



3) Pull cocking handle backwards, make sure it's locked. (figure 3)



4) Place the forend to the barrel. Make sure that barrel fully seated to the forend. (figure 4)





5) Push the forend and barrel downwards, seat it full on receiver. The barrel bracket to magazine tube screw and placing barrel extension into the receiver are simultaneous and seat the barrel fully. (figure 30)



6) Install the magazine cap by turning it clockwise. (figure 6)



7) Close the bolt slide by pressing carrier latch button on right-hand side of receiver. Take the shotgun to safe position. (figure 7)



SAFETY BUTTON

Press on safety button on trigger group until red ring that shows firing position becomes invisible (figure 8).

When the red ring becomes invisible the shotgun is in the safety position.



LOADING

Prior to starting anything on your hunting shotgun, unload the chamber and magazine tube! (Carefully read instructions regarding loading and unloading the shotgun).

Magazine tube takes 1, 2, 3 or 4 cartridges (depending on model and regional regulations). Capacity is 2, 3, 4 or 5 bullets including one at the chamber.

LOADING PROCEDURE

NOTE: Make sure that safety button of your hunting shotgun (see “Safety button”) is working and bolt is locked (so that the carrier latch may hold cartridges inside magazine tube).

CAUTION: For safety purposes, check if the shotgun is unloaded when the bolt slide opens. Then, close the bolt slide again.

1) Close the bolt or push carrier latch button. (figure 9)



2) With bolt slide closed and hammer lifted, point the barrel towards a safe direction.

3) Place a cartridge in magazine tube (figure 10): push until it is held by the carrier latch which works automatically (figure 10). Repeat the process until magazine tube is fully loaded.



NOTE: The shotgun must be loaded with the bolt locked so that the carrier latch may hold cartridges placed in the magazine tube..



A) Direct Loading

Pull the bolt slide backwards and place a cartridge through cartridge ejection window. (figure 11)



Close the bolt slide by pressing on carrier latch's button. (figure 12)



B) Indirect loading

Pressing on disconnecter, ensure that 1 cartridge inside the magazine falls on carrier. (figure 13)



Pull cocking handle backwards all the way and release. (figure 14)



CAUTION: Through procedure “B”, number of cartridges in the magazine tube will be reduced by one. A new cartridge may be placed to full load the magazine tube.

NOTE: During this process, always point the shotgun to a safe direction even if safety button is on (see “safety button”). Now, the shotgun is loaded: When the safety button is moved to firing position (red ring appears), the shotgun is ready to fire.

The shotgun must be absolutely in safety position during loading process.

CAUTION: Because of sensitive machine tolerances of your hunting shotgun, a running-in period may be necessary for excellent operation of your new shotgun with light target loads. If you experience any operational troubles in the beginning, we recommend you to shoot three or four boxes of standard cartridges, considering such running-in period.

CARDRIDGE CHANGE

(This must be performed when safety button of the shotgun is closed – see “Safety button” – and barrel is directed towards a safe direction). In order to change a cartridge in chamber;

- 1- Remove cartridge at chamber by pulling cocking handle back position and pushing carrier latch button at the same time.
- 2- Do not release the cocking handle.
- 3- Place a new cartridge through cartridge ejection window.
- 4- Release the cocking handle.



UNLOADING

(This must be performed when safety button of the shotgun is turned on – see “Safety button” – and barrel is directed towards a safe direction.)

Perform the following process to unload the shotgun:

1) First, remove cartridge at chamber by pulling the cocking handle back all the way, and pushing carrier latch button at the same time. (figure 15)



2) Release the cocking handle and close the bolt slide (figure 16)



3) Press on carrier with index finger of your right hand. (figure 17)



4) Ensure that cartridge is removed by pressing index finger of your left hand on front side of the carrier latch. (figure 18)



5) Repeat this process until there is not any cartridge left at magazine tube.

TROUBLE SHOOTING

Prior to starting anything on your hunting shotgun, unload the chamber and magazine tube!

(Carefully read instructions regarding loading and unloading the shotgun).

The shotgun does not fire:

- 1- Check the safety button: If safety button is on, switch the button to firing position.
- 2- Check if there is any cartridge in the barrel. If there is not, put a cartridge by following loading instructions.
- 3- Check the firing system. Clean and lubricate, if necessary.
- 4- Make sure that the bolt slide is fully closed.
- 5- Make sure that the barrel is fully seated and magazine cap is tight.
- 6- Check your cartridge.

CARTRIDGE SELECTION

Istanbul Silah Sanayi advises use of minimum 28 gram 2-3/4" and maximum 52 gram 3" cartridges at 12 caliber semi-automatic IMPALA PLUS hunting shotgun.

CAUTION: You must not use cartridges with cases longer than chamber.

Failure to comply with this rule may result in serious consequences both for shotgun and user.

No adjustment on shotgun is necessary for firing any of the abovementioned cartridges.

Always use cartridges strong enough to provide smooth cycling.

MAINTENANCE

Prior to starting anything on your hunting shotgun, unload the chamber and magazine tube!

(Carefully read instructions regarding loading and unloading the shotgun).

IMPALA PLUS hunting shotgun does not require any special maintenance because of its quality material, design and workmanship.

The following is recommended for maintenance and trouble-free usage for a very long period of time:

- 1- Regular inner and outer barrel cleaning and oiling using the appropriate shotgun protection oil after use;
- 2- Firing system composed of hammer, trigger, etc. may be clogged by any gunpowder residue (or foreign body). Remedy this by periodically cleaning or lubricating.
- 3- Bolt slide group also may be clogged by same substance and it must be periodically disassembled, cleaned and lubricated;
- 4- In order to keep the gun in good condition, it is recommended to lubricate parts exposed to atmospheric corrosion.

NOTE: Inside of all barrels are chrome plated.

Prior to starting anything on your hunting shotgun, unload the chamber and maga-



DISASSEMBLY FOR MAINTENANCE

azine tube!

(Carefully read instructions regarding loading and unloading the shotgun).

DISASSEMBLY PROCEDURE

1) Remove magazine cap by turning counterclockwise (figure 19)



2) Pull cocking handle back all the way (figure 20)



3) Remove forend and barrel. (figure 21)



4) Grip cocking handle with a hand and press carrier latch button with the other hand then slowly release the cocking handle.

5) Turn the cocking handle 90° counterclockwise and remove it. (figure 23)



6) Remove pins of trigger group. (figure 24)



7) Press the release button before remove the trigger group. (figure 25)



8) Remove the trigger group. (figure 26)



9) Remove bolt slide group by pushing it towards in front of receiver. (figure 26)



Now, the shotgun is fully disassembled. All parts requiring periodical maintenance and cleaning are separated.

Places and parts to be cleaned and maintained:

- 1- Cleaning and lubricating bolt slide, rotaty bolt and extractor
- 2- Cleaning and lubricating inside and outside of barrel
- 3- Cleaning and lubricating trigger group
- 4- Cleaning and lubricating inside receiver and receiver slides



ASSEMBLY AFTER MAINTENANCE

Implement the following for accurate assemblage after cleaning and maintenance procedures:

1) Place the bolt slide into receiver slides in front of the receiver and install it. Meanwhile, make sure that link is seated in link piston in back of the receiver. (figure 27)



2) Place the cocking handle into the bolt slide and ensure that it is locked by turning 90° clockwise. (figure 28)

3) Place the forend to the barrel. Make sure

that barrel fully seated to the forend. (figure 29)



4) Push the forend and barrel downwards, seat it full on receiver. The barrel bracket to magazine tube screw and placing barrel extension into the receiver are simultaneous and seat the barrel fully. (figure 30)



5) Tighten the magazine cap to the end by turning clockwise. (figure 31)



6) Pressing carrier latch's button, install trigger group. Meanwhile, pay attention that pin holes of trigger group are in alignment with holes of receiver pin. (figure 32)



7) Complete installation by attaching pins of trigger guard. (figure 33)



CAUTION: After completion of installation, remember to take safety of the shotgun to safety position.

Prior to starting anything on your hunting shotgun, unload the chamber and magazine tube!

(Carefully read instructions regarding loading and unloading the shotgun).



CHOKE TUBE

These are muzzle contraction parts installed to barrel muzzle which are supplied together with the shotgun and numbered according to various sizes.

In order to replace or clean a choke tube, implement the following:

1) Using special choke wrench supplied with the shotgun, remove choke and fully remove out of barrel tube (figure 34)



2) Clean threads at choke and barrel without using any hard objects (may be with gun cleaning oil and air)

3) Using choke wrench, install the choke in its place. (figure 35)

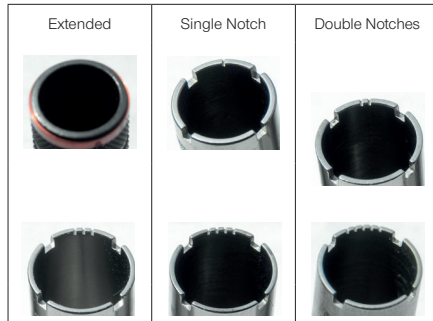


NOTE: When a choke tube is installed accurately, it must not protrude out of muzzle.

NOTE: Before using the hunting shotgun again, make sure that choke wrench is removed from muzzle.

After using the tube, it is recommended to clean choke tube and choke side threads.

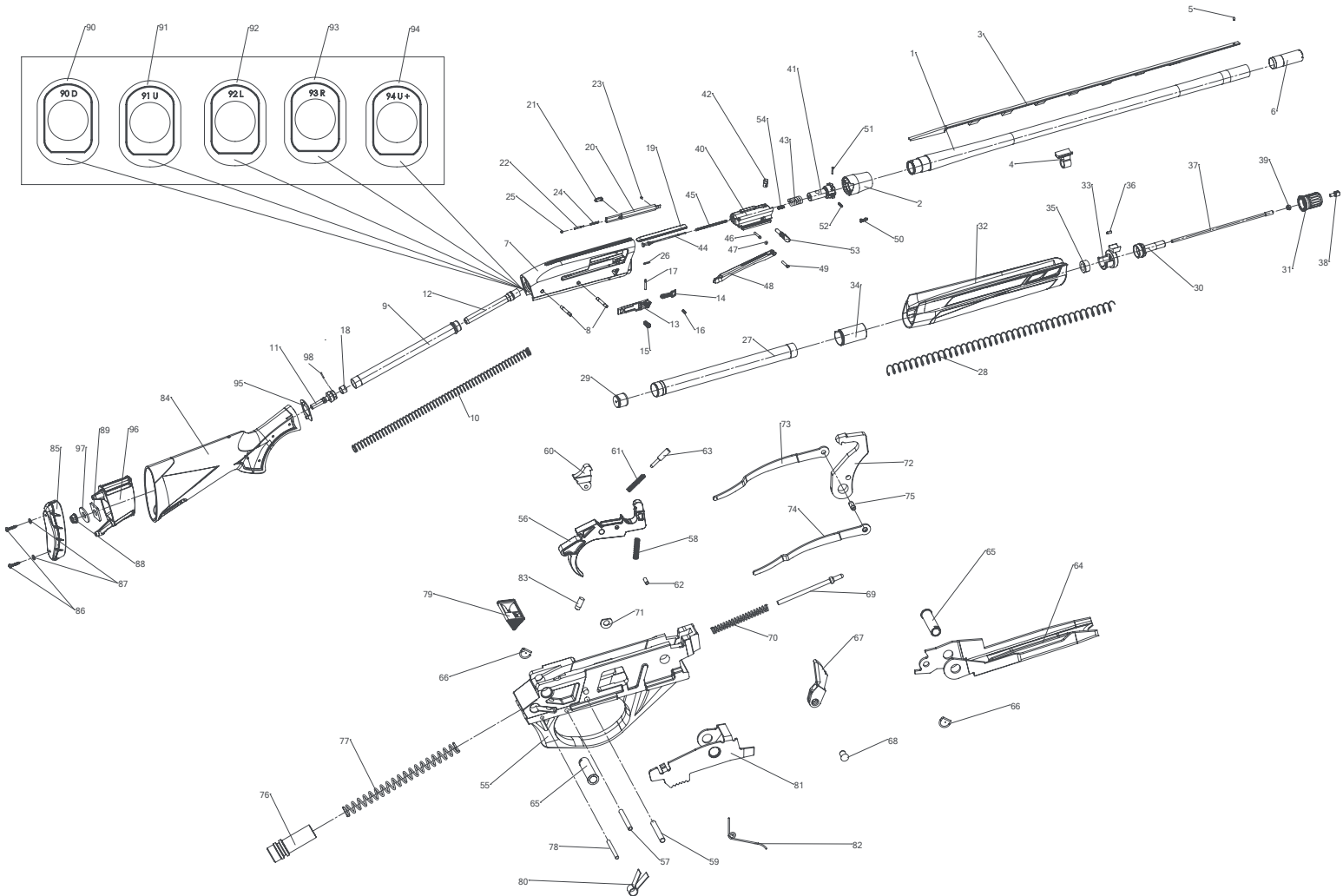
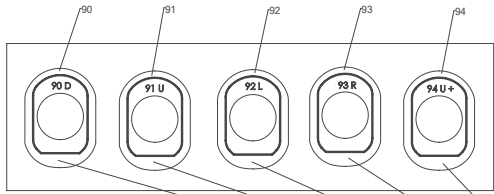
IMPALA PLUS barrel choke tubes are marked at muzzle side for ease of use and their numbers are visible even if installed to the barrel.



EDGE NOTCHES	DIST RIBUTION WITH LEAD SHOT	DISTRIBUTION WITH STEEL SHOT	PART #S
EXTENDED	EX-FULL	*	YM 06 0023
I	FULL	FULL	YM 06 0024
II	IMP. MODIFIED	FULL	YM 06 0025
III	MODIFIED	MODIFIED 1/2	YM 06 0026
IV	IMP. CYLINDER	IMP. CYLINDER 1/4	YM 06 0027
V	CYLINDER	CYLINDER	YM 06 0028
CHOKE WRENCH			YM 06 0013

*: Not suitable for use with steel shots. Use of unsuitably narrow chokes shall cause ineffective distribution.

NOTE: See page 20 for the part list and schema.



PART NAME	
BARREL GROUP	
IP001	BARREL TUBE
IP002	BARREL EXTENSION
IP003	RIB
IP004	BARREL BRACKET
IP005	FRONT SIGHT
IP006	CHOKE TUBE
RECEIVER GROUP	
IP007	RECEIVER
IP008	TRIGGER GUARD PIN
IP009	ACTION SPRING TUBE
IP010	ACTION SPRING
IP011	ACTION SPRING TUBE SCREW
IP012	LINK PISTON
IP013	REAR CARRIER LATCH
IP014	FRONT CARRIER LATCH
IP015	REAR CARRIER LATCH SPRING
IP016	FRONT CARRIER LATCH SPRING
IP017	CARRIER LATCH PIN
IP018	BUFFER
IP098	BUFFER PIN
IP019	RECEIVER INSERT
IP020	EJECTOR
IP021	EJECTOR PIN
IP022	EJECTOR MOVING PIN
IP023	EJECTOR FIXING PIN
IP024	EJECTOR SPRING
IP025	EJECTOR SCREW
IP026	CARRIER LATCH SEGMENT
MAGAZINE GROUP	
IP027	MAGAZINE TUBE
IP028	MAGAZINE SPRING
IP029	MAGAZINE FOLLOWER
IP030	MAGAZINE TUBE SCREW
IP031	MAGAZINE CAP

PART NAME	
IP032	FOREARM
IP033	FOREARM FRONT PLASTIC
IP034	FOREARM INSERT
IP035	FOREARM FRONT RING
IP036	FOREARM PLASTIC SCREW
IP037	MAGAZINE REDUCER
IP038	SLING
IP039	SLING NUT
BOLT SLIDE GROUP	
IP040	BOLT SLIDE
IP041	ROTARY BOLT
IP042	CAM PIN
IP043	BOLT SPRING
IP044	FIRING PIN
IP045	FIRING PIN SPRING
IP046	FIRING PIN STOPPER
IP047	FIRING PIN O-RING
IP048	LINK
IP049	LINK PIN
IP050	EXTRACTOR
IP051	EXTRACTOR PIN
IP052	EXTRACTOR SPRING
IP053	COCKING HANDLE
IP054	COCKING HANDLE SCREW
TRIGGER GROUP	
IP055	TRIGGER GUARD
IP056	TRIGGER
IP057	TRIGGER STOPPER
IP058	TRIGGER SPRING
IP059	TRIGGER PIN
IP060	SEAR
IP061	SEAR SPRING
IP062	SEAR MASTER PIN
IP063	SEAR PIN
IP064	CARRIER

PART NAME	
IP065	CARRIER TUBE
IP066	CARRIER TUBE SEGMENT
IP067	CARRIER DOG
IP068	CARRIER DOG PIN
IP069	CARRIER DOG PUSHER
IP070	CARRIR DOG SPRING
IP071	CARRIER DOG RING
IP072	HAMMER
IP073	HAMMER LINK LEFT
IP074	HAMMER LINK RIGHT
IP075	HAMMER LINK PIN
IP076	HAMMER PUSHER
IP077	HAMMER SPRING
IP078	HAMMER PUSHER PIN
IP079	SAFETY BUTTON
IP080	SAFETY BUTTON PUSHER
IP081	DISCONNECTOR
IP082	DISCONNECTOR SPRING
IP083	SAFETY BUTTON PUSHER PIN
STOCK GROUP	
IP084	STOCK
IP085	RECOIL PAD
IP086	RECOIL PAD SCREW
IP087	RECOIL PAD SCREW RING
IP088	BUTTSTOCK FIXING NUT
IP089	BUTTSTOCK FIXING LINK
IP090	CAST DOWN
IP091	CAST UPPER
IP092	CAST LEFT
IP093	CAST RIGHT
IP094	CAST UPPER +
IP095	BUTTSTOCK INSERT
IP096	BUTTSTOCK FIXING PART
IP097	BUTTSTOCK FIXING RING



Service Station

Paducah Shooters Supply Inc.

3919 Cairo Road

270-443-7967

gunsmith@pssguns.com

ATTN: * * * *

Business Name :

Contact Name :

Serial Number :

Model :

Email :

Phone :

Shipping Address (NO PO BOXES):

Brief Description of issue:

NOTES



ISTANBUL SILAH VE SAVUNMA SANAYI TIC.

A.Ş.

DUDULLU OSB 1. CD NO:7 UMRANIYE/ISTAN-
BUL/TURKEY

www.istanbulsilah.com

OFFICIAL US DISTRIBUTOR

KFI USA LLC

5415 W HOMOSASSA TRAIL UNIT B

LECANTO, FL 34461

352-419-4185

info@kfi-usa.com - www.kfi-usa.com